

Lake Auburn Watershed **Protection Commission**

Newsletter Winter 2021

What's Inside This Issue?

- Commissioner Bios
- Lake Auburn Study
- New Education and Outreach Coordinator
- Work on Whitman Spring Road
- Bates College Tot Lot Presentation
- 2021 Recap

Past Events

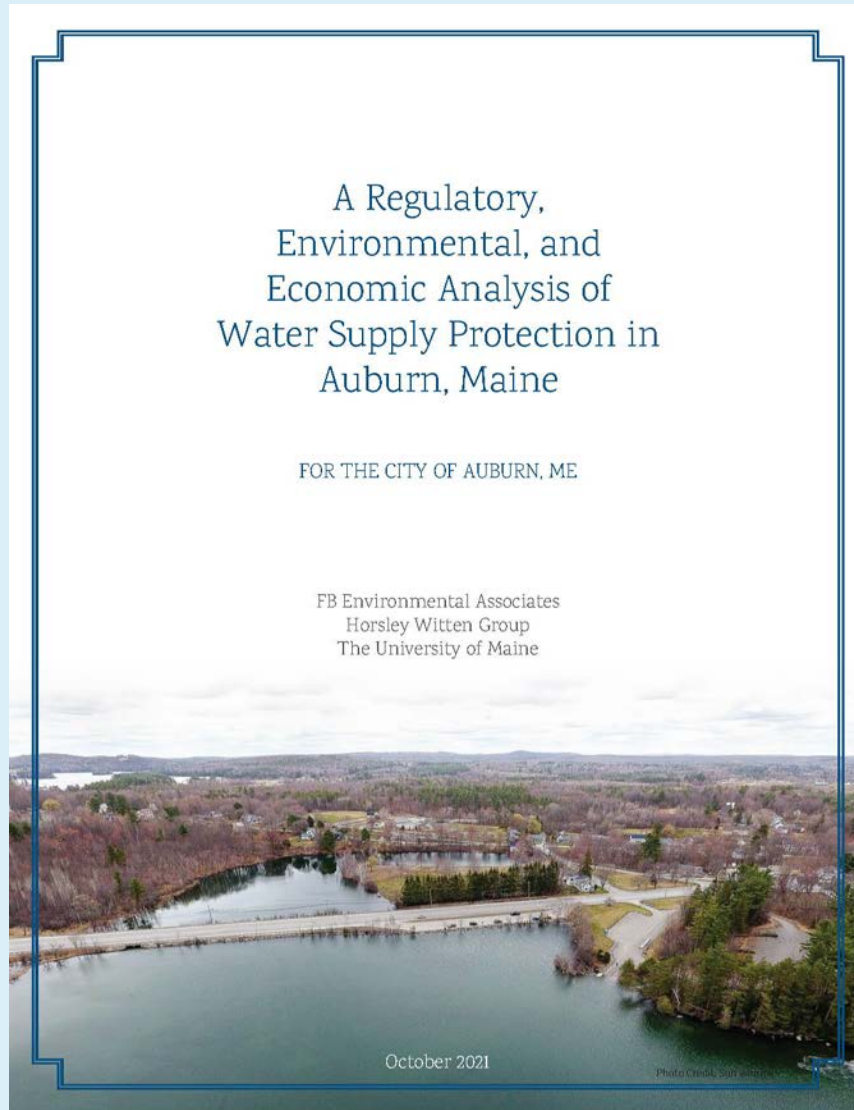
- November 10th, LAWPC Meeting
- November 20th, Trail Maintenance Day
- December 1st, LAWPC Workshop



Lake Auburn, December 2021

Lake Auburn Study

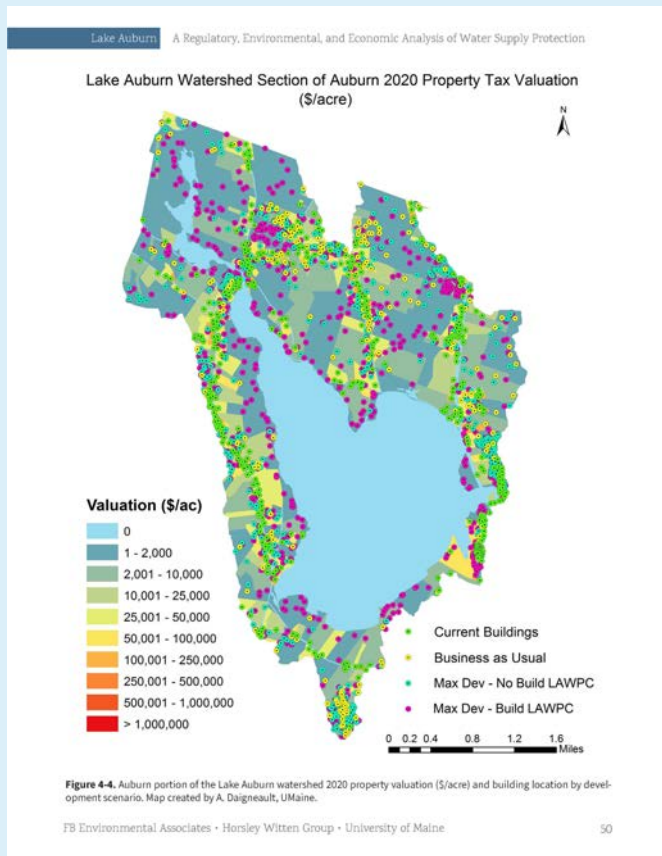
In early 2021, the City of Auburn commissioned a study to analyze the regulatory, environmental, and economic factors related to protecting the public drinking water supply of Lake Auburn. The study was conducted by FB Environmental Associates, Horsley Whitten Group, and the University of Maine. The final report was made available to the public in October, and currently can be found on the City of Auburn's website.



During the data collection phase of the study, the consultants reached out to Auburn Water District (AWD) and Lewiston Water Division (LWD) staff for water quality data, documents relating to water supply, and organizational information. AWD trustees were interviewed as well. LAWPC documents and background information were also requested by the consultants, and were provided by staff.

Lake Auburn Study

A significant finding of the study is that increased development in the Lake Auburn watershed would negatively impact water quality in the lake. Maintaining a predominantly forested watershed is key to keeping Lake Auburn a high quality drinking water supply for approximately 50,000 people. A suggestion of the study is that collaboration between all the towns in the watershed should take place to manage development. LAWPC has board members who collectively represent each of the towns within the Lake Auburn watershed, and who can work towards the goal of minimizing impacts from development on water quality in the public drinking water supply.



For more detail on all of the study recommendations, please refer to the report on the City of Auburn's [website](#).

Meet the Commissioners

The Lake Auburn Watershed Protection Commission is made up of 9 commissioners. 3 members are appointed by Auburn Water District with 1 of those members being an Auburn Water District Trustee, 2 members are appointed by the City of Lewiston with 1 of those members being a city councilor, 1 member by position of the Lewiston Public Works Director, 1 member is appointed by the Town of Turner, 1 member is appointed by the Towns of Minot, Hebron, and Buckfield, and 1 member is by position of the Executive Director of the Androscoggin Valley Council of Governments.



Stephen French, Chair

Towns of Hebron, Minot, and Buckfield Representative

Stephen lives in Minot and has been a resident since 1974. He is married and has two grown children. He has served the town in a few different capacities. He served as fire chief for twenty-five years and is still a member, has been a selectman for about twenty years, and he has served as chairman the last few. Stephen grew up on the shore of Lake Auburn, graduated from Edward Little High School, worked for the Auburn Water District for fourteen years, then spent some years perusing other interests and a few years in construction. After that Stephen started working at the Mechanic Falls Water Department where he still currently works and has been the superintendent for the last fourteen years, and he holds a class three water operator's license in both plant and distribution. He enjoys his role of protecting the watershed.

Meet the Commissioners

Evan Cyr, Vice Chair

City of Auburn Representative

Evan is a lifelong resident of Auburn and was appointed as a Commissioner for LAWPC in 2020. He has been living in the Lake Auburn Watershed for six years, having lived in the New Auburn neighborhood prior to that. He graduated from the University of Maine in 2005 with a Master's Degree in Education and has been teaching high school science for 16 years. He has also served on the Auburn Planning Board for 10 years, and enjoys being civically involved in the community. His goals for LAWPC are to maintain excellent drinking water quality by ensuring a healthy Lake Auburn and promoting access for individuals to enjoy the lake in an environmentally responsible way.



Camille Parish

City of Auburn Representative

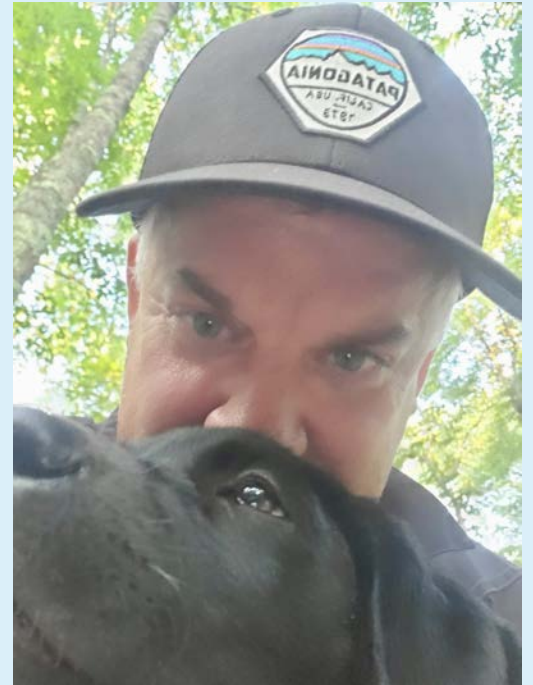
Camille was elected as a LAWPC commissioner for the city of Auburn in 2019. She has lived in Auburn for over 30 years. Camille is an environmental scientist, currently working in the Environmental Studies Program at Bates College. She has had the opportunity to be involved with water quality sampling of Lake Auburn and review the lake and stream data over the years. Camille's primary focus is on LAWPC's mission of watershed protection to maintain the quality of the drinking water supply for its users. She is also interested in continuing low impact recreational use of the surrounding land, where feasible.

Meet the Commissioners

Dan Bilodeau

Auburn Water District Representative

Dan was born and raised in Auburn, having recently moved in the Lake Auburn watershed in 2004. His home was the first Low Impact Development (LID) house built in the area. He currently serves as both an Auburn Water District Trustee (2014) and as a Commissioner for LAWPC since 2019. He is a father of two daughters and he's employed as an airline pilot. You're most likely to find him building or maintaining multi-use recreational trails near his home, Lake Auburn, and the Lost Valley areas. Having served on both of Auburn's Comp Plan Committee(s), the Planning Board and Forest Board, his goal is to update watershed governances by taking a modern approach, with using science and data.



Mary Ann Brenchick

City of Lewiston Public Works Director

Mary Ann became a Commissioner for LAWPC in 2021 but has been working in public service for over 25 years. Prior to returning to Maine last year, she served as the Executive Director for Clean Valley Council in Roanoke, Virginia, encouraging environmental stewardship and education. She graduated from Antioch New England with a Master's Degree in Management and undergraduate work in Civil Engineering Technology. Mary Ann and her husband Jay live in Lewiston and have three grown children. She is passionate about sustainability and creating a regional plan. Mary Ann is committed to help the commission develop strong partnerships with property owners in the watershed and assist with educating the public about the importance of protecting our drinking water source.

Meet the Commissioners

Caleb Roebuck

Lewiston City Council Representative

Caleb joined the Lake Auburn Watershed Protection Commission in January of 2021 when he was appointed as the Lewiston citizen representative. He then became the Lewiston City Council representative when he was appointed to the City Council in September of 2021. Caleb has a background and education in Environmental Law and Policy and has really enjoyed walking around and canoeing in Lake Auburn. His goals are to protect the lake and watershed to preserve nature and keep our water clean.



Dan Dubé

City of Lewiston Representative

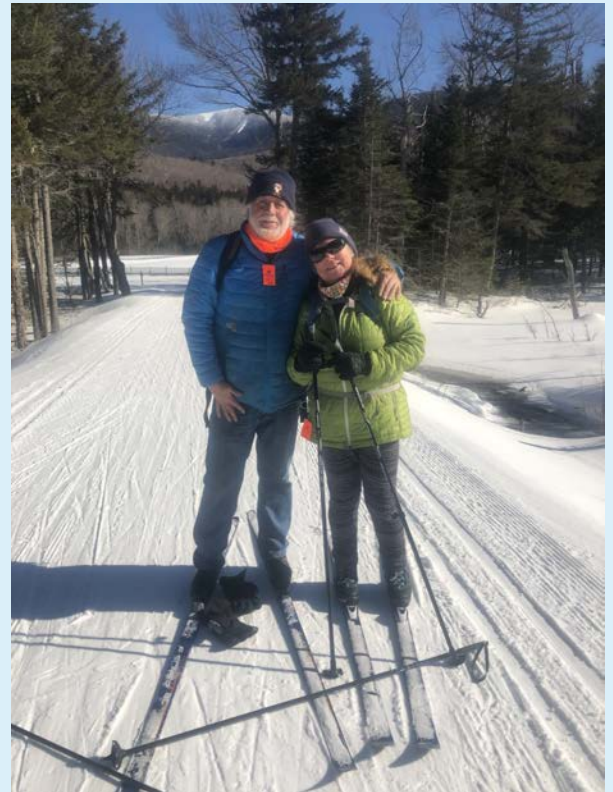
Dan Dubé recently joined LAWPC in the fall of 2021. He is a fourth-generation resident of the Lewiston-Auburn region, grew up in Augusta, and currently works in Lewiston. He graduated from George Washington University Law School, has been a licensed attorney since 2012, and has been practicing locally in Lewiston and statewide in Maine since 2014. Dan is involved with the local community in many ways. He has been a member of the City of Lewiston Board of Appeals for 8 years, is a current board member of the Stanton Bird Club, and can often be found canoeing on Lake Auburn during the summer. His goals are to be as knowledgeable about the laws and facts affecting the Commission and the water supply as possible, to follow the laws and to do what is necessary to protect the water supply, and to educate the public about LAWPC.

Meet the Commissioners

Alan Holbrook

Town of Turner Representative

Alan became a Commissioner for LAWPC in 2020 but has been living in the Lake Auburn Watershed for over 50 years. As a kid he would spend much of his time walking on Spring Road and at the North Auburn Cash Market. He graduated from the University of Maine in 1986 with a degree in Psychology, and has been a social worker for the past 30 years. Alan and his wife currently live in Turner and their daughter also lives in the watershed. Alan is very pro-environment and enjoys hiking, kayaking, and snowshoeing. His goals are to maintain the high-quality water in Lake Auburn, and finding a balance between recreation and conservation.



Amy Landry

AVCOG Executive Director

Amy joined LAWPC in 2017 by position as the Executive Director for Androscoggin Valley Council of Governments (AVCOG). A lifelong resident of Lewiston, Amy obtained an MBA from Southern New Hampshire University and a B.S. in Business Administration/Management from Bryant University, in Smithfield, RI. Amy joined AVCOG in 1996 and has been the Executive Director since 2017. She lives in Lewiston with her husband and two high school aged daughters. Although she spends much of her time watching soccer, hockey and lacrosse games, when she isn't following her daughters' activities, she enjoys trail walking and hiking, camping, and traveling through Western Maine. Amy endeavors to support the maintained high water quality standards while balancing recreational opportunities in the watershed.



Drainage Improvements on Whitman Spring Road

Some of you may have noticed heavy equipment and work being done on Whitman Spring Road in Auburn this fall. Lewiston Water Division (LWD) began replacing old culverts along the road to improve water flow from tributaries to Lake Auburn. Many of the original culverts were metal and had sections that had rusted away, which allowed for water flowing through them to pick up soil and carry it to the lake. New plastic culverts prevent this from happening and will last longer under the road. Riprap (stone) was placed at the inlets and outlets of the culverts to stabilize the soil and slow down the velocity of stormwater.



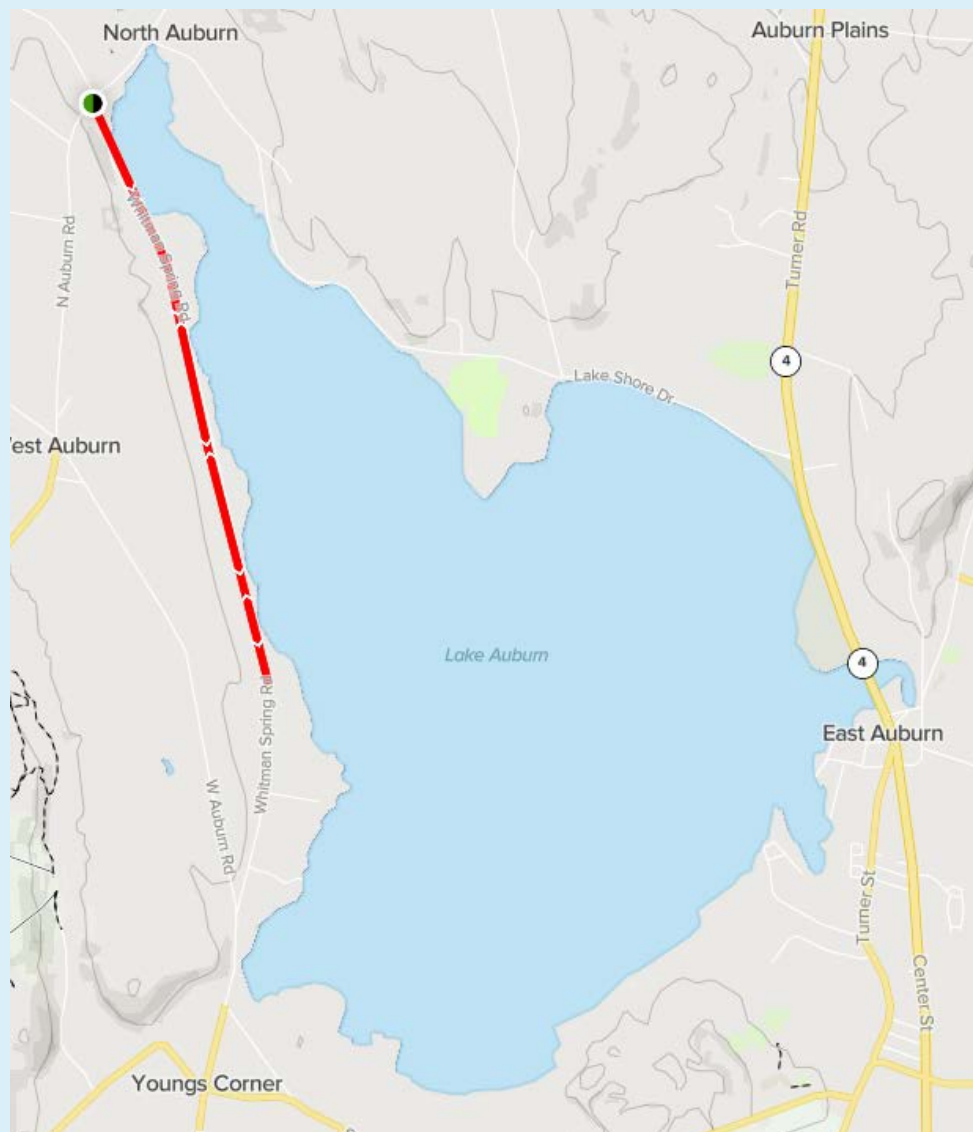
An older metal culvert that has rusted.



A new plastic culvert leading to an outlet with riprap.

Drainage Improvements on Whitman Spring Road

Ditching was done to help drain water off the dirt road and into a vegetated path towards a culvert. Vegetated ditches slow down stormwater, take up nutrients, and work to infiltrate runoff. All of these management practices are done in an effort to limit the amount of nutrients, primarily phosphorus, that enter Lake Auburn by way of stormwater runoff in tributaries. Limiting phosphorus loading in the lake is crucial, as elevated phosphorus levels in the lake can lead to algae blooms and poor water quality. The drainage improvements done on Whitman Spring Road this year were recommended in previous watershed studies prepared for LAWPC. Culvert replacements, ditching, and grading will continue on this road in 2022.



Map from AllTrails of Whitman Spring Road and the LAWPC Trail. There is parking on the north and south side of the trail.

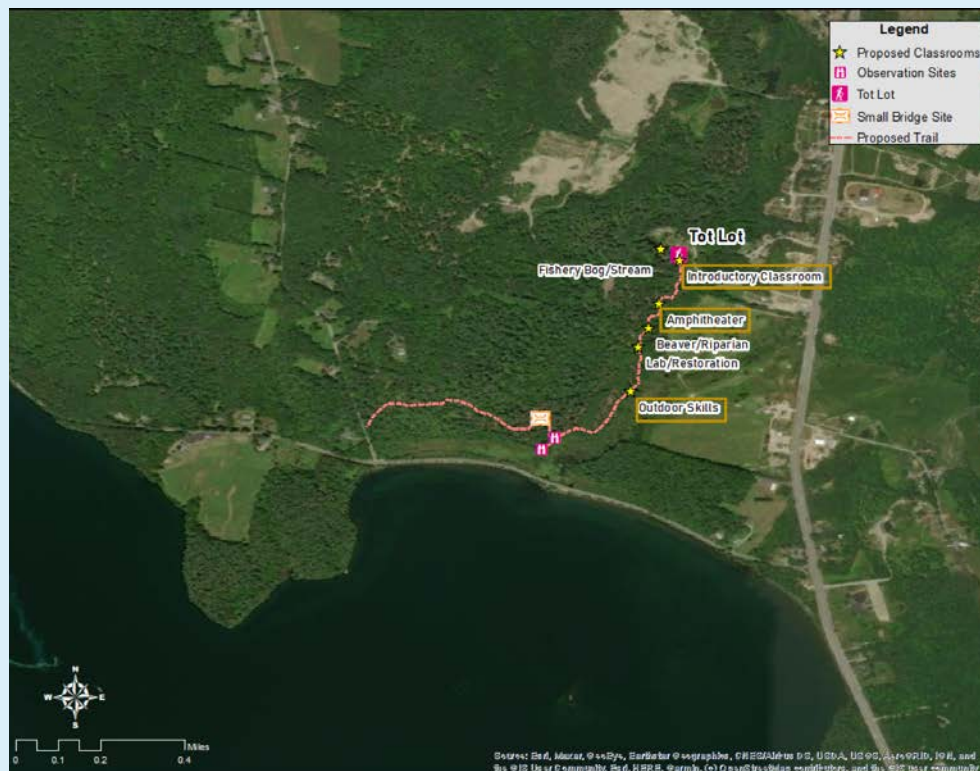
New Education and Outreach Coordinator

Carolyn Houtz started the position as Education and Outreach Coordinator, October 2021. She grew up in Stamford, Connecticut and moved to Maine in 2016 to study at the University of Maine in Orono. She recently graduated with a B.S. in Environmental Science with a concentration in Sustainability, and a B.A. in Economics. Carolyn applied to the job because she is interested in the community aspect of conservation and environmental science. She has goals to make LAWPC information more accessible, collaborate with new groups, and to continue the protection and education of Lake Auburn. She looks forward to learning as much as she can and meeting with everyone involved. If you have any questions or ideas you would like to share please contact her at choutz@awsd.org



Bates College Tot Lot Presentation

Bates College students Daphne James, Dan Bileca, and Jesse Hagy worked with LAWPC, Auburn Parks and Recreation, and Wil Libby from Evergreen Outdoor Education to construct goals and recommendations of an outdoor learning center at LAWPC's land near Auburn Tot Lot Park. LAWPC unanimously approved Wil Libby's proposal to develop the property into a multi-use trail and outdoor learning center in September, and the Bates College students – or the Tot Lot Team – helped advance that idea and offer recommendations on timelines, community outreach, and infrastructure. Their public presentation was held December 6th.



Map by Daphne James, Dan Bileca, and Jesse Hagy

The Outdoor Learning Center will be a trail going through LAWPC's land connecting Auburn's Tot Lot to LAWPC's Salmon Point. Along the trail there will be around 8 different outdoor education classrooms. Each classroom allows students or recreationalists to further interact with the natural and physical environment around them. The goals of each classroom are to engage with local ecology, learn about applied natural history, and build confidence in the outdoors.

Bates College Tot Lot Presentation

The Tot Lot Team mapped out the proposed trail and themed outdoor classrooms. The trail stays on LAWPC property, and does not cross any topographic lines which allows the trail to be relatively flat and more accessible. Some classroom themes are learning about bogs, impacts of timber harvesting, native and invasive species, wildlife, and more. With the help of Branden Rush an Academic Technology Consultant at Bates College, the Tot Lot Team was able to take drone footage of the proposed path and classrooms, as well as Lake Auburn (footage available to view on our [YouTube](#)). The recommended next step for this project is to clear and build as much of the walking trail as possible, start developing curriculum, and work with local entities to improve parking lots and visibility.



Photos by Daphne James, Dan Bileca, and Jesse Hagy

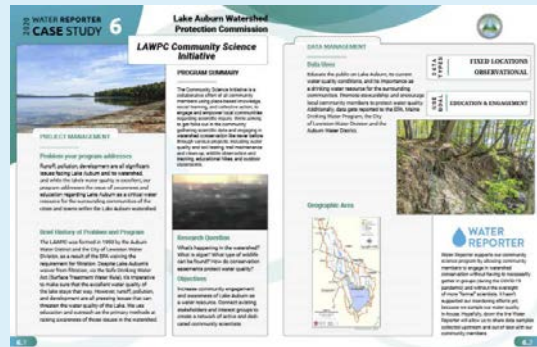


Drone footage by Branden Rush

2021 Recap



Water Reporter and iNaturalist apps involved community with sharing observations in the watershed



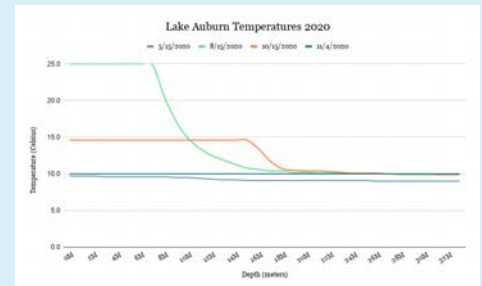
LAWPC featured in a Water Reporter case study



Forest management timber harvests on Lake Shore Drive and Summer Street, Auburn



Winter wildlife tracking workshop with Ben Nugent, USDA Wildlife Biologist



Zoom watershed lessons with local middle and high schools

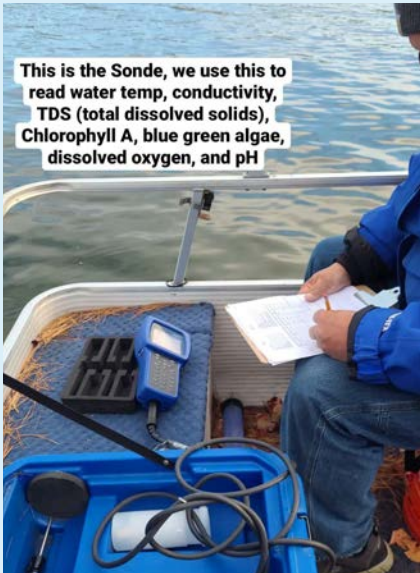


Drone videos of timber harvests by Lewiston Police Department



Courtesy boat inspections at Route 4 boat launch

2021 Recap



Water quality sampling of Lake Auburn with Bates College and Trinity College



AWD/LWD helped City of Auburn with water quality sampling at the Outlet Beach recreation area



Whitman Spring Road drainage improvements

Invasive species land management and planning



LAWPC supported trail development near the Tot Lot by Evergreen Outdoor Education



Auburn middle school pollution lesson, plant tour, and trail walk



Land stewardship at Salmon Point

Lake Auburn Watershed Protection Commission

268 Court Street

Auburn, ME 04212



@LAKEAUBURN



@LAKEAUBURNWATER

Check us out at <https://lakeauburnwater.org/>

Switching to an electronic newsletter will help us save paper! You can subscribe by emailing choutz@awsd.org