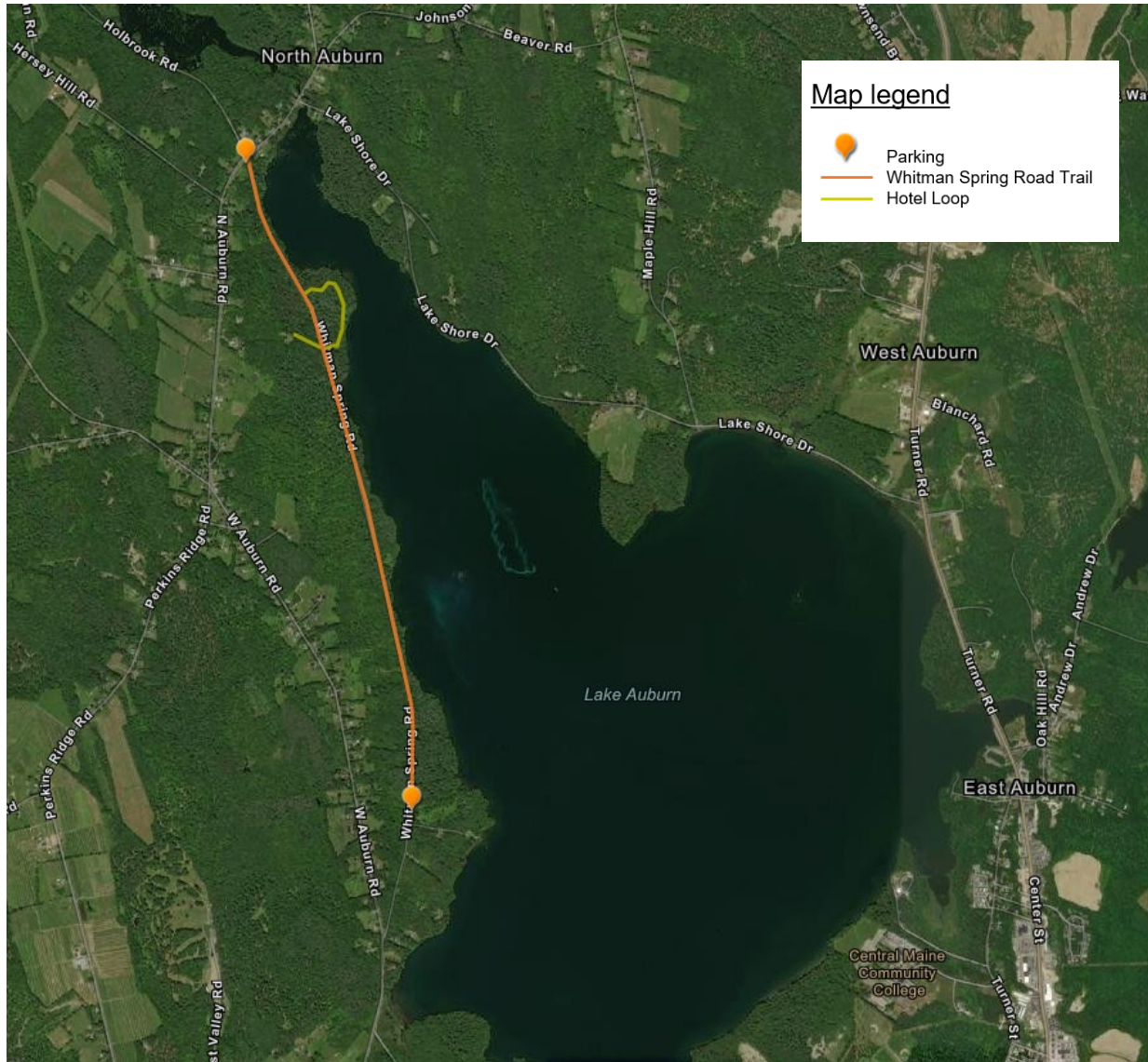




Whitman Spring Road Trail Map

Lake Auburn Watershed Protection Commission



Whitman Spring Trail is an out-and-back trail with 2 miles going in one direction and 4 miles round trip. The Hotel Loop is about .4 miles. There is parking at the North and South ends of the trail. Parking at the North Gate is at the intersection of North Auburn Road and Whitman Spring Road in Auburn, and parking at the South Gate is on Whitman Spring Road.

Hours: Dusk to Dawn

Trail Rules:

- Carry in carry out
- Pets are allowed on a leash and pet waste must be removed
- Stay on marked trails
- No contact with water: \$2,5000 fine
- No fires
- No feeding wildlife
- No motorized vehicles of any kind